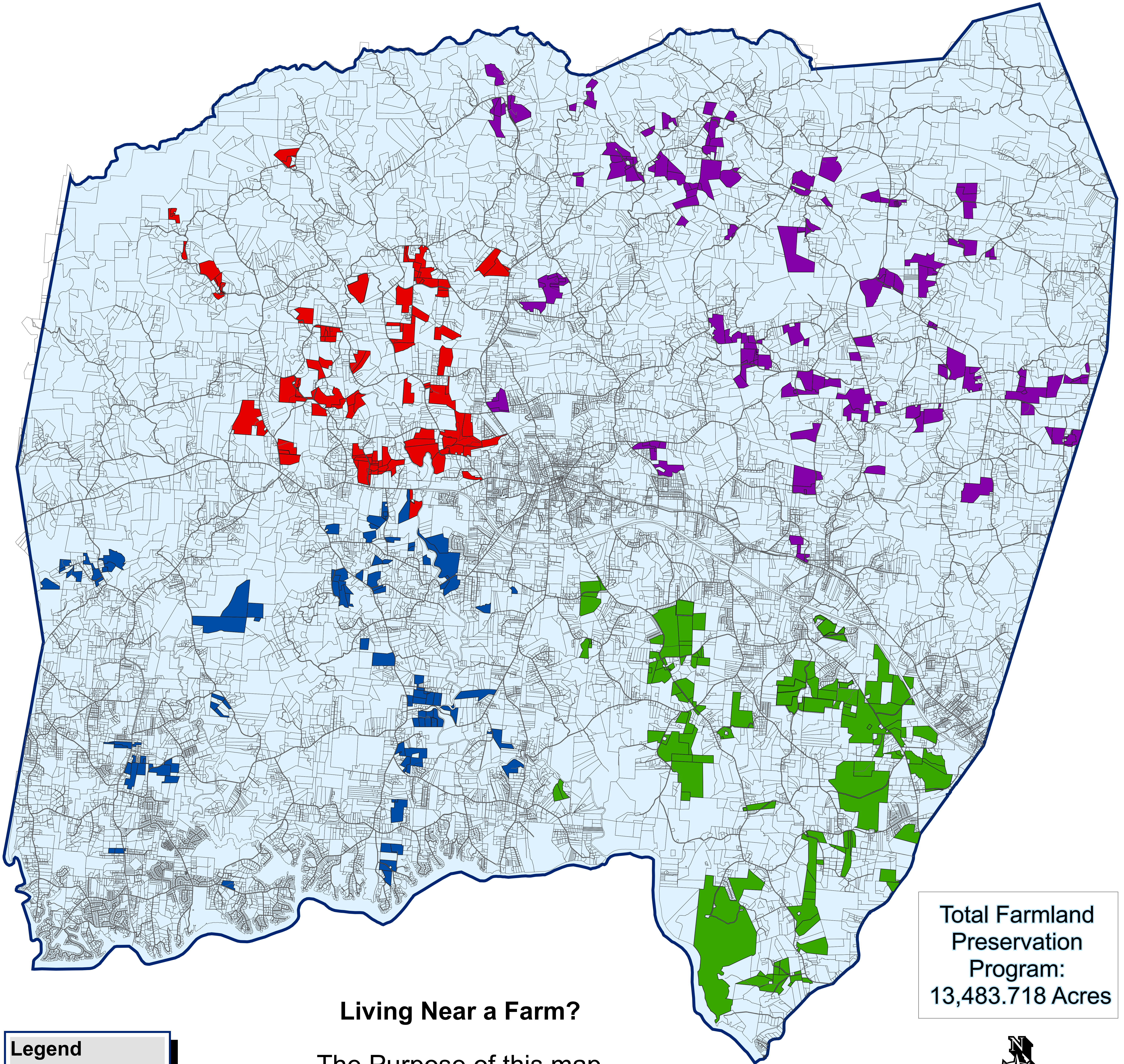




FARMLAND PRESERVATION 2025

"Protecting and preserving your agricultural communities for future generations"



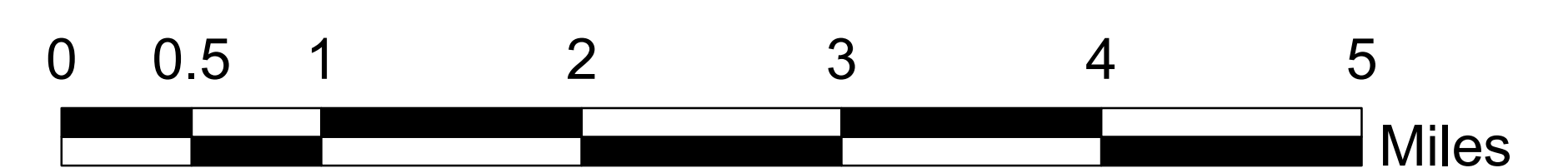
Total Farmland Preservation Program:
13,483.718 Acres

Living Near a Farm?

The Purpose of this map is to make potential buyers aware of existing farmlands that are adjacent to prospective properties

Legend

- Streets
- ▭ Parcels
- Farmland Parcels**
- QUADRANT**
- ▭ QUADRANT A
- ▭ QUADRANT B
- ▭ QUADRANT C
- ▭ QUADRANT D
- ▭ County Line



Map Generated by Alexander County GIS Department
February 13, 2025

THIS MAP IS PREPARED FOR THE INVENTORY OF REAL PROPERTY FOUND WITHIN THIS JURISDICTION AND IS COMPILED FROM RECORDED DEEDS, PLATS AND OTHER PUBLIC RECORDS AND DATA. USERS OF THIS MAP ARE HEREBY NOTIFIED THAT THE INFORMATION HEREIN IS FOR GENERAL INFORMATION ONLY AND SHOULD BE CONSULTED FOR VERIFICATION OF THE INFORMATION CONTAINED ON THIS MAP. THE COUNTY AND THE MAPPER ASSUMES NO LIABILITY FOR THE INFORMATION CONTAINED ON THIS MAP. THIS MAP IS BASED ON THE NORTH CAROLINA STATE PLANE COORDINATE SYSTEM 1983 NORTH AMERICAN DATUM. INTERNATIONAL FOOT CONVERSION.